

# Heartland Managed Services

Remote Backup and Raw Storage for Disaster Recovery



## Survival of the Pessimist.

Although pessimists are rarely good company, they are the perfect people to design a Disaster Recovery plan for your organization. To plan ahead, you must predict the worst case scenario to ensure up-time and business continuity through ominous disasters such as a flood, fire, hurricane, or tornado. But what about human error, hardware failure, or employee sabotage? Could you sustain your profitability through long term power outages, acts of terror, or a pandemic? No organization is exempt from the need to safely and securely move their critical data off-site for recovery in inevitable times of need.



## The Heartland Disaster Recovery Advantage.

When a disaster strikes, you don't have time to *think*. The time to think is *now*. Trust Heartland to move into action on your behalf as we recover your data from our very own on-premises in-house physical Data Center. We do not outsource this very important aspect of your Disaster Recovery plan. Whether you need access to files or entire systems in minutes, hours, or days we can help you meet your Recovery Time Objective. Whether you prefer a tape based backup or a disk-to-disk backup, we will help you efficiently restore back to your Recovery Point Objective. We're committed to tailoring the best solution to help you maintain the Business Continuity your unique organization requires.

Put your Heart into IT.



# Three Disaster Recovery Solutions.

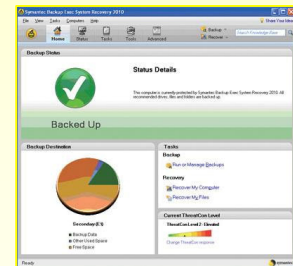
## Remote Backup via Asigra

Agentless software is installed in your cross-platform multi-site environment which will incrementally send your data to the Heartland Data Center for recovery. Your data is deduplicated, compressed, and encrypted in flight and at rest. Advanced replication, retention, and archiving available. This is an ideal solution for a reliable file and system state cloud backup for local and remote backup and recovery. Monthly pricing is based on your total protected capacity.



## Remote Backup via Symantec NetBackup PureDisk

NetBackup PureDisk is the deduplication engine for NetBackup, enabling efficient, storage-optimized data protection for the data center, remote office and virtual environments. NetBackup PureDisk is a software-based deduplication solution that is tightly integrated with NetBackup. PureDisk is ideal for unique environments that require high performance and scalability. This is a perfect solution for Windows based Symantec customers. Monthly pricing is based on your total protected capacity.



## Raw Storage with Backup Exec System Recovery (BESR)

Symantec Backup Exec System Recovery 2010 is a simple, cost-effective backup and recovery solution for small businesses that helps minimize downtime and avoid disaster by easily recovering individual data files/folders or complete Windows systems in minutes – not hours or days – even to different hardware, virtual environments, or remote locations. Coupled with Heartland’s FTP based Raw Storage service, this *dynamic duo* caters to the small business with limited IT staff and less than four Windows servers. BESR licensing applies. Monthly pricing is based on your total protected capacity.

## About Heartland Business Systems.

Heartland Business Systems has enjoyed over 20 years of being a premier provider of value added information technology solutions to corporate, education, financial, government, and not-for-profit clients. Our mission is “to implement hardware and software technologies that will improve the profitability of the clients we serve.” We are a Wisconsin-based firm with over 250 employees and 60 system engineers holding over 600 technical certifications.

## About Heartland’s Data Center.

Precision-Controlled Air Conditioning, Redundant, 24x7 Power & Air, High-Capacity Power Generator Backup, State-of-the-Art Fire Detection & Suppression, Sophisticated Onsite Security Surveillance, Advanced Biometric Data Center Entry, Continually Updated Switches & Routers, Multiple Bandwidth connections through several providers to ensure uptime, An Extensive List of Satisfied Customers!

## Heartland Business Systems

### Headquarters

1700 Stephen Street, Little Chute, WI 54140  
Toll Free: (800) 236-7914  
Main Line: (920) 788-7720  
Fax: (920) 788-7739  
[www.hbs.net](http://www.hbs.net)

### Milwaukee Branch

N28W23050 Roundy Drive, Suite 2A Pewaukee, WI 53072  
Toll Free: (800) 236-7914  
Main Line: (262) 650-6500  
Fax: (262) 650-6530  
[sales@hbs.net](mailto:sales@hbs.net)

## Victorin Business Systems,

### A Heartland Company

5400 Patton Drive Unit 4B, Lisle, IL 60532  
Toll Free: (866) 903-5293  
Main Line: (630) 390-3000  
Fax: (630) 390-3008  
[service@victorin.com](mailto:service@victorin.com)